

## The Print Center Reopens & Fall Exhibition Preview

**PHILADELPHIA, PA** – (August 4, 2021) The Print Center is pleased to announce its reopening to the public following a closure of 16 months. While our galleries were closed, we worked virtually to successfully present five exhibitions created specifically for online viewing, and ten iterations of *Windows on Latimer*, site-specific installations in our iconic bay window, to be seen from the street.

We are delighted to reopen to the public with Gallery Store Feature Exhibition ***Qiaoyi Shi: Birthday Party***, on view through August 27, 2021.

To follow in late September, will be two major exhibitions, ***Anastasia Samoylova: FloodZone*** and ***Back and Forth: The Space in Between***, a solo exhibition by artist **Ivanco Talevski**.



Qiaoyi Shi, *Dark Melon*, 2020. Courtesy of the Artist

---

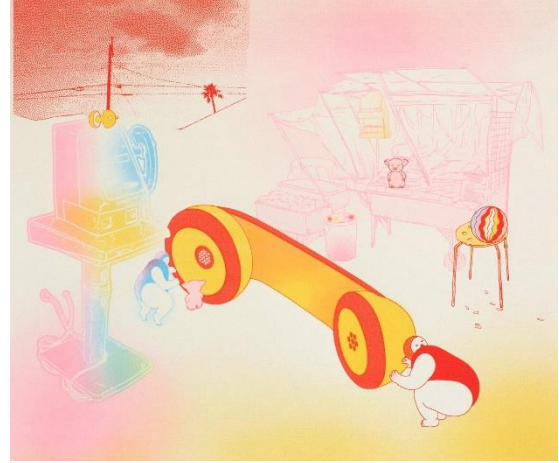
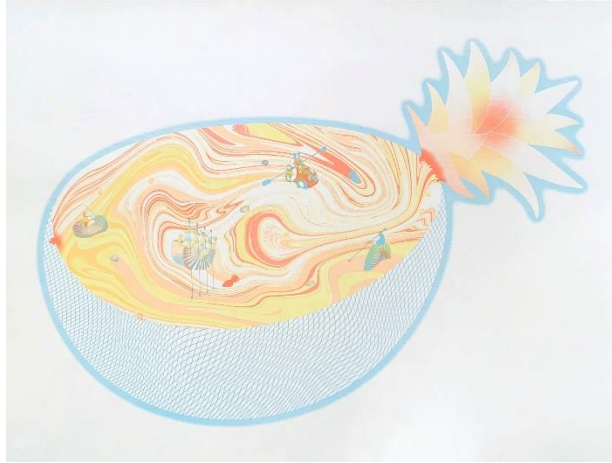
### Qiaoyi Shi: Birthday Party

**July 8 – August 27, 2021**

Comprised of recent work by the New York City-based printmaker and illustrator, ***Birthday Party*** features playful, sensual works that celebrate food, color and the body through abstracted representations of fruit and anthropomorphized characters based on edible treats. Shi invites the viewer to indulge in the joys of printmaking, layering vibrant hues and patterns to produce appetizing screenprints, photolithographs and risograph prints.

Full of vibrant colors, lively imagery and intricate patterning, Shi's work depicts scenes belonging to a universe of obtuse figures and personified food. Starting with digital illustrations created using vector technology, she then prints the work using a variety of processes.

Shi values collaboration in the making of her prints, finding inspiration with **Amze Emmons** in the concepts and imagery of the “Mobile Suit Watermelon” series and executing her work in partnership with Channel Graphics, a professional printer located in Philadelphia. This allows her to mine the possibilities of each process and merge her vision with Emmons’ to create jubilant and peculiar visual worlds.



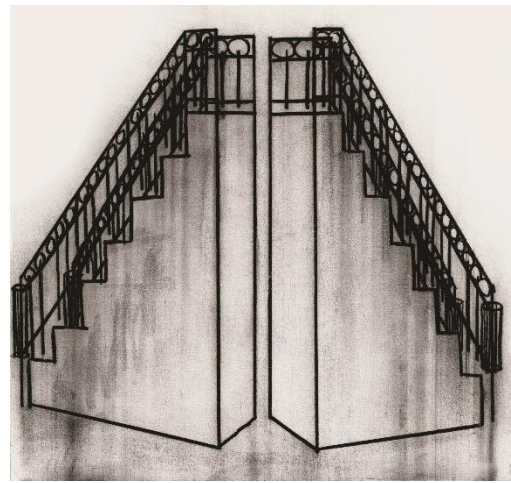
(left) Qiaoyi Shi, *Blue Pineapple*, 2020, screenprint, edition of 10, 18” x 24”; (right) Qiaoyi Shi & Amze Emmons, *Mobile Suit Watermelon 1*, 2019, screenprint, AP, edition of 5, 13 ½” x 15”. Courtesy of the Artists

**Qiaoyi Shi** (New York, NY) is an illustrator and printmaker. Shi received a BFA from Parsons School for Design, New York, NY and an MFA from Tyler School of Art and Architecture, Temple University, Philadelphia, PA. Shi’s work has been included in group exhibitions at Blanc Gallery, Chicago, IL; The National Museum of American Illustration, Newport, RI; and Vox Populi, Philadelphia. Shi teaches at Parsons School of Design and Pratt Institute, Brooklyn, NY. Shi is co-owner of YUI Gallery, New York, NY.

**Amze Emmons’** (Philadelphia, PA) work explores disaster and refugee architecture, depicting these lonely, isolated spaces with a sweet and curiously cheerful color palate. A highly skilled printmaker, Emmons utilizes numerous processes including etching, silkscreen, relief and stencil to create an odd juxtaposition of color and mood. His cityscapes force the viewer to question representations of reality. Emmons received a BFA from Ohio Wesleyan University, Delaware, OH and an MFA from the University of Iowa, Iowa City. His work has been widely shown across the United States, as well as in Australia, Japan and New Zealand. Emmons is an Associate Professor at Tyler School of Art & Architecture, Temple University, Philadelphia and was a co-founder of Printeresting.org.

## Fall Preview

**Anastasia Samoylova: FloodZone** will feature large-scale photographic works which respond to the effects of rising sea levels in Miami, FL, where Samoylova now resides, having moved to the U.S. from Russia. In *FloodZone*, she explores the complexities and realities of the urban landscape in coastal environments in light of global climate change. Samoylova often uses juxtaposition and reflection to create poignant images that reveal the results of unchecked commercial development on the environment and its human inhabitants, as well as the indigenous flora and fauna, as seen in the image below, of an alligator trapped in a swimming pool by flooding. Her photographs are steeped in the pastel palette of Miami, as seen in the advertising and architecture. The appealing colors belie the story of reckless building and land use.



(left) Anastasia Samoylova, from the series "FloodZone"; (right) Ivanco Talevski, *Walnut Street Stoops (May, 15th, 2017)*, 2017, charcoal on paper, 30" x 32". Courtesy of the Artists

In ***Back and Forth: The Space in Between***, **Ivanco Talevski** maps the artist's existence between his two homes in Philadelphia, PA and Bitola, Macedonia. The exhibition will comprise new works which address the dual identities a single individual can embody – a phenomenon that is universal but has a specific significance for immigrants. It is the culmination of years of planning between the Philadelphia-based, Macedonia-born artist and The Print Center's Executive Director Elizabeth Spungen, who serves as co-curator with Ksenia Nouril, PhD. Inspired by Talevski's drawings which evoke the space *in between* two physical, conceptual and emotional places, he layers and reseats graphic motifs of architectural structures, figures, foliage, mirrors and flags in screenprints, projections and photographs. The exhibition includes a major collaborative audio work with Vasko Dukovski, who has composed and recorded a symphony in nine parts in response to visual works by Talevski.

## Related Programs

### Opening Reception and Gallery Talk

Thursday, September 23, 5:30pm

### Artist Talk and Book Launch with Ivanco Talevski

Thursday, October 28, 6:00pm

**Additional programs will be announced. Please visit [printcenter.org](http://printcenter.org) for updates and information, including if programs will be held onsite or virtually.**

---

## About The Print Center

### Mission

For more than a century, The Print Center has encouraged the growth and understanding of photography and printmaking as vital contemporary arts through exhibitions, publications and educational programs. The Print Center has an international voice and a strong sense of local purpose. Free and open to the public, it presents changing exhibitions, which highlight established and emerging, local, national and international contemporary artists. It mounts one of the oldest art competitions in the country, now in its 96th year and the Gallery Store offers the largest selection of contemporary prints and photographs available for sale in Philadelphia, as well as being available online.

### Funders

Support for The Print Center is offered by Bryn Mawr Trust; COVID-19 Arts Aid PHL Fund; Dolfinger-McMahon Foundation; Forman Family Fund; Sheila Fortune Foundation; Fund for Children; Allen Hilles Fund; Christian R. and Mary F. Lindback Foundation; Christopher Ludwick Foundation; Manko, Gold, Katcher & Fox; The Andrew W. Mellon Foundation; National Endowment for the Arts; William Penn Foundation; Pennsylvania Council on the Arts; The Pew Center for Arts & Heritage; Philadelphia Cultural Fund; The Philadelphia Foundation; Rosenlund Family Foundation; Henrietta Tower Wurts Memorial; and our Board of Governors, Luminaries, members and friends.



---

### The Print Center

1614 Latimer Street  
Philadelphia, PA 19103  
p: 215.735.6090 info@printcenter.org

[www.printcenter.org](http://www.printcenter.org)  
[facebook.com/printcenterphilly](https://facebook.com/printcenterphilly)  
@ThePrintCenter #ThePrintCenter

Free and open to the public  
Tuesday – Saturday, 11:00am – 6:00pm  
Closed Saturdays August 7 – September 4

**All visitors are required to wear masks.**

###